

FORT SILL



# OUTDOOR RECREATION

• Your One-Stop Shop for Outdoor Fun and Adventure! •



# OUTDOOR ADVENTURE CENTER

Recreational Equipment Checkout Center

## Hours of Operation (Apr - Sept)

**Thursday - Monday:** 9 am - 5 pm

**Tuesday - Wednesday:** CLOSED

**Holidays:** CLOSED

## Hours of Operation (Oct - Mar)

**Mon, Thurs - Sat:** 9 am - 5 pm

**Tues - Wed & Sun:** CLOSED

**Holidays:** CLOSED

The **Outdoor Adventure Center** offers a large variety of rental items such as tents, camping gear, moon bounces, and carnival games. We help Soldiers and family members acquire skills and develop interests that will last a lifetime. The Outdoor Adventure Center is your go-to source for camping, boating, inflatables, games, and party supplies.

All rental fees are paid in full at the time of reservation. Deposits are required for certain items and are returned minus any cleaning or damage fees.

All motor boat renters are required to show a Oklahoma boaters safety course certificate. The free course can be taken online at: [www.boatus.org](http://www.boatus.org).

Cancellations must be made a minimum of 48 hours in advance in order to receive a full refund. Rain checks and credits will be issued to those who are unable to cancel within the 48 hour period.

Equipment returned late will be assessed a full day's rental rate.

On weekends, you pay for two days and get the equipment for three days (Friday-Monday). Weekly rate, pay for five days and get seven.

Outdoor Adventure Center is open to the public. You must have DoD ID Card or visitor pass to access Fort Sill.





All information such as hours of operation and prices are subject to change at any given time. Please stay up-to-date by following us on Facebook:

**Facebook.com/FortSillMWR**

Boating	Daily	Weekend	Weekly
Bayliner (\$300 Cash deposit is required)	\$150	\$300	\$525

Miscellaneous	Daily	Weekend	Weekly
Honda Generators	\$45	\$90	\$225
Porta Coolers (\$50 Cash deposit is required)	\$55	\$110	\$275
Air Dancer	\$25	\$50	\$125
Santa/Easter Bunny Suit	\$35	\$70	\$165
Flatbed Trailer	\$25	\$50	\$125
Cargo Trailer (6x10)	\$35	\$70	\$175

Table and Chairs	Daily	Weekend	Weekly
Captains Chair w/Table	\$10	\$15	\$40
Captains Chair	\$10	\$15	\$35
Folding Chairs (15)	\$25	\$55	\$120
Folding Chairs (50)	\$60	\$120	\$270
Folding Chair Bulk (100)	\$85	\$160	\$385
4 Foot Folding Table	\$5	\$10	\$20
6 Foot Folding Table	\$7	\$12	\$28
8 Foot Folding Table	\$9	\$20	\$45

Food Equipment	Daily	Weekend	Weekly
Popcorn Machine	\$20	\$40	\$100
Sno Cone Machine	\$20	\$40	\$100
Candy Apple Machine	\$20	\$40	\$100
Cotton Candy Machine	\$30	\$60	\$145

Camping Gear	Daily	Weekend	Weekly
Ice Chest (M)	\$5	\$10	\$25
Ice Chest (L)	\$6	\$12	\$30
Party Cooler, Plastic	\$5	\$10	\$25
5 Gal Water Jug	\$2	\$4	\$10

Camping Gear	Daily	Weekend	Weekly
Lantern	\$3	\$6	\$15
Lantern w/ Case	\$3	\$6	\$15
New Propane Smoker Heater	\$50	N/A	N/A
Cot	\$2	\$4	\$10
Stove (all types)	\$3	\$6	\$15
Propane Skillet	\$6	\$12	\$30
Foam Pads	\$1	\$2	\$5
Sleeping Bag	\$3	\$6	\$15
Tent, 2-3 Person	\$10	\$15	\$40
Tent, 4-6 Person	\$15	\$25	\$60
Gazebo 10x10	\$20	\$40	\$100
Gazebo 10x20	\$40	\$80	\$200
Towed Charcoal Grill	\$30	\$60	\$150
40 Gal Grill (small)	\$10	\$20	\$50

Camping Package	Daily	Weekend	Weekly
Basic Camping Package Includes 2-3 Person Tent, (2) Sleeping Bags, Lantern, and Stove	\$20	\$40	\$95
Family Package Includes 4 Person Tent, (4) Sleeping Bags, Lantern, and Stove	\$30	\$60	\$150







Games	Daily	Weekend	Weekly
Croquet Set	\$5	\$10	\$25
Horse Shoes (metal)	\$3	\$6	\$15
Child Horse Shoes (plastic)	\$1	\$2	\$5
Potato Sacks	\$5	\$10	\$25
Softball Kit	\$15	\$30	\$65
Flag Football	\$15	\$30	\$65
Limbo	\$35	\$70	\$175
Tug-O-War Rope	\$5	\$10	\$20
Volleyball w/Net	\$5	\$10	\$20
Volleyball w/ Poles	\$8	\$15	\$35
Child's Bowling	\$5	\$10	\$25
Bean Toss	\$20 <sub>ea</sub>	\$40	\$100
Tic-Tac-Toss	\$25	N/A	N/A
Dunk Tank	\$50	\$105	\$250
Sumo Suits/Kid's Sumo	\$80 <sub>ea</sub>	N/A	N/A
Kiddie Striker	\$25	\$50	\$125
Blongo	\$20	\$40	\$100
Tip-A-Troll	\$20	\$40	\$100
Krazy Kans	\$20	\$40	\$100
Skee Roll/Cue Ball	\$25	\$50	\$125
Ring Toss	\$4	\$8	\$20
Cornhole (child)	\$10	\$20	\$50
Cornhole (adult)	\$20	\$40	\$100
Bingo	\$20	N/A	N/A

All equipment is to be returned clean. Some items require a cleaning deposit. The cleaning fee/deposit on grills is \$50; on any other items the fee/deposit is \$10 per item.

# CAMPER RENTALS

Outdoor Adventure Center • Fort Sill • (580) 442-0930

Looking for an opportunity to get away for a couple of nights, a weekend or a week? Plan your staycation at Lake Elmer Thomas Recreation Area or hit the road with one of our spacious travel trailers which provide all the amenities a family, or group of friends, needs to get away.

**No pets allowed.**

**PLEASE NOTE:** A \$300 deposit is required.

## STARCRAFT TRAVEL TRAILER

Sleeps up to **10 persons**

Double-over-double bunks, 2 pull out beds, and a full size bed. A/C, Heat, Refrigerator AM/FM Radio & CD Player and USB input. 2 Thirty Pound LP Bottles, Two-Burner Stove



Daily	Weekend (Fri-Mon 930am)	Weekly
\$140	\$300	\$750

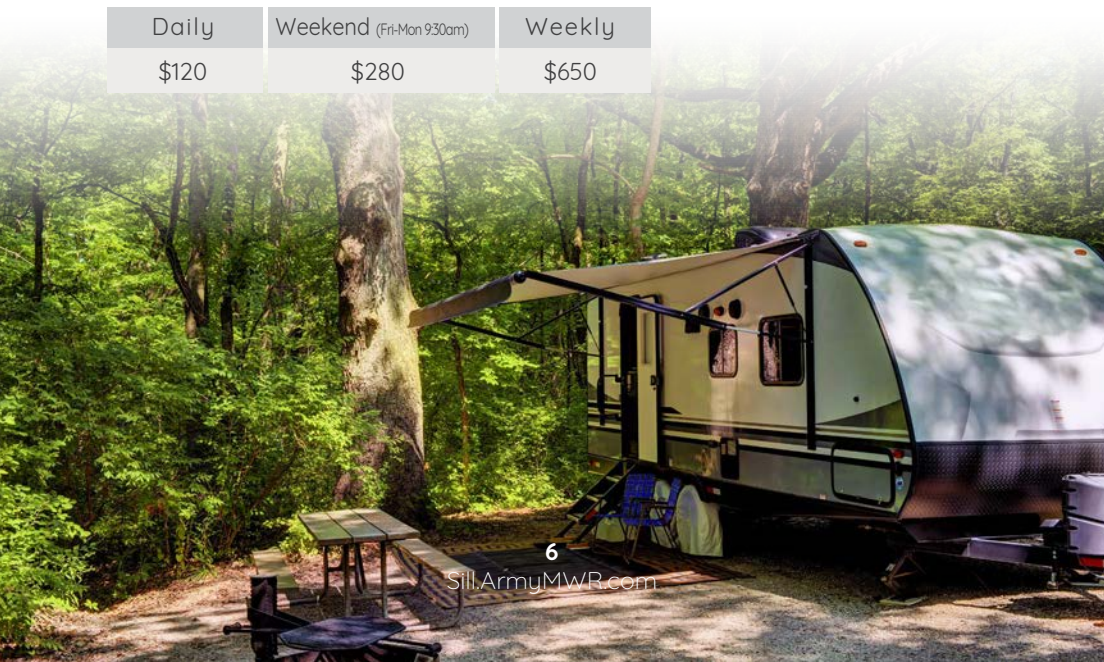
## SALEM TRAVEL TRAILER

Sleeps up to **5 persons**

2 Bunks, a pull out bed, and a full size bed A/C, Heat, 2 Thirty Pound LP Bottles, AM/FM Radio & CD Player, Two-Burner Stove, Refrigerator



Daily	Weekend (Fri-Mon 930am)	Weekly
\$120	\$280	\$650





# Party Supplies

Having a Birthday Party or Event? Let the Outdoor Adventure Center bring the fun with an inflatable bounce. Call (580) 442-0930 for more details.

Inflatables	Daily
Moon Bounces (13x15)	\$90-145
Human Pretzel	\$95
Princess Combo	\$145
Boxing Ring	\$105
Tug-N-Dunk	\$145
2 Lane Bungee/Joust	\$145
3D Twister	\$140
Brave Knight Combo	\$160



## Inflatable Carnival Games:

Monkey Hoop | Tigger Throw | Snow ball | Baseball Show  
\$65ea, \$55ea for 2, \$50ea for 4



## Patriot Club Operation Cake:

Surprise your loved one with a cake for a birthday, anniversary, promotion or any other celebration! The Patriot Club is now offering a top secret cake order and delivery to your spouse, friend or coworker!

Call the Patriot Club for more details (580) 442-5300.

Cakes require 2 weeks notice and recipients must be on Fort Sill.

## LETRA Lodge:

Looking for a place to host your event? The LETRA Lodge is available to rent for parties, unit and organization functions, reunions, etc. Call LETRA for more details at (580) 442-5858.





# MEDICINE CREEK RV PARK

Apache Gate Road • Fort Sill • Oklahoma

Medicine Creek is a beautifully shaded RV park located along the banks of historic Medicine Creek, across from the Nature Center. Pavilion and permanent facilities are available. It offers 11 full service sites and check-in/check-out is NOON daily.

Its convenient location near main post means the park is only a quick drive to the PX, Fitness Centers, and Theater. Medicine Creek RV Park is a perfect spot for guests who are looking for a quiet, peaceful travel experience. With a seasonally stocked creek running through the area, you don't have to go far for some great fishing.

Tent camping is not allowed at this location but spots are available at LETRA.

Make a reservation online at [adv-travel.com](https://adv-travel.com) or by calling (580) 250-4000.

All Sites:      \$30/Night  
                     \$155/Week  
                     \$425/Month

**PLEASE NOTE:** A reservation guarantees you a space in the park.

# LETRA RV PARK

7463 Deer Creek Canyon Rd. • Fort Sill • Oklahoma

RV Site Rentals	Nightly	Weekly	Monthly
The LETRA RV Park has level, pull through sites with water, sewer, and 30 or 50 amp service.	\$40	\$175	\$445





# FORT SILL PARKS



Fort Sill has the perfect spot for your next reunion or picnic. You can reserve one of the five outdoor parks at the Outdoor Adventure Center. These parks can be reserved for your family outings or group at no charge.

## Medicine Creek Park

Located along the banks of historic Medicine Creek, across from the Nature Center. Pavilion and permanent facilities are available.



## CO-OP Park

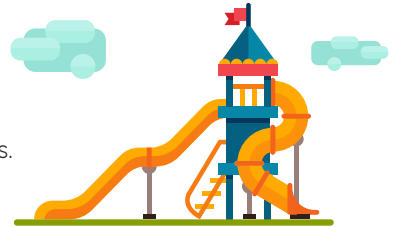
Located on Upton Road between Fort Sill Blvd. and Quinette Road next to the Martha Song Bird Nature Area makes this park perfect for a rest after a nature hike. Includes playgrounds and the NEOS interactive electronic game.

## Ambrosia Spring Park

A secluded park, nestled in the woods. Pavilion and primitive facilities are available.

## Quinette Park

A large open park with space for games and events. Pavilion and primitive facilities are available.



## Rucker Park

An open park with plenty of space for games and events. Originally built as a training site for the 1930's Army Equestrian Team.



Scan this QR code  
for more information  
on Fort Sill Parks.



# LAKE ELMER THOMAS RECREATION AREA (LETRA)

7463 Deer Creek Canyon Road • Fort Sill • (580) 442-5858/5854

Enter Key Gate from I-44. Turn right on Currie Road, turn left on Randolph Road, turn right on Tower Two Road (be cautious of the water crossings). Go approximately 1.8 miles and turn left on Deer Creek Canyon Road (not labeled). Go approximately 3.6 miles and LETRA is on your right.

**DO NOT enter LETRA into your GPS as it will take you to the wrong location.**

## Seasonal Activities

Double Flume Water Slide

Bath House and Beach

Miniature Golf Course

Paddle boats & boards, Kayaks

Country Store

And Much More

## Year Round Activities

45 RV Campsites w/Full Hookups

Picnic Pavilions with Grills

Playgrounds

Laundry Facility

Boat Launch

Fishing, Archery Course, Paintball



## STAY UP-TO-DATE!

Scan the QR Code and become a member of LETRA's Facebook Group to stay up-to-date on LETRA events, classes, and information.

## Tent Sites (No reservations)

Tent camping is available at LETRA year round. Sites are first come, first serve and some sites come with a small covered pavilion, grill, and picnic table. Check in at the LETRA Country Store or with the Camp Host after hours to obtain your camping permit. Fire pits are available for rent to enhance your camping experience.

## Tent Permit

\$12/Day/Tent



## LETRA CABINS

The LETRA cabins are ideal for the campers who like the camping experience with the comfort of home. Cabins come equipped with refrigerator, microwave, coffee maker, dishes and utensils, two-burner stove, bathroom with shower, and a television/DVD. Cabins are available in 3 sizes; small, medium, and large.

**Cabins do NOT include linens or towels.**

Don't forget to pack your sheets, blankets, pillows, and towels.

Cabins	Daily
Small *Sleeps 4 Max. 1 Full Size Bed/1 Futon	\$90
Medium *Sleeps 6 Max. 2 Full Size Beds/1 Futon	\$100
Large *Sleeps 7 Max. 2 Full Size Bed/1 Twin Bed/1 Futon	\$110



### RESERVATIONS:

Visit: [www.adv-travel.com](http://www.adv-travel.com) to make online reservations for LETRA's cabins and the RV Park.

## LETRA RENTALS

Lake Elmer Thomas Recreation Area has a variety of equipment available to rent and activities to enjoy. Rentals are done directly out of the LETRA Country Store year-round.



All rentals must remain on LETRA and Lake Elmer Thomas.

### Equipment:

Canoes:	\$12	
Kayaks:	\$12	
Paddle Boats:	\$12	
Paddle Boards:	\$12	
*Bass Boat:	\$50	\$160
*Pontoon Boat:	\$50	\$175
*Mini Pontoon Boat:	\$50	\$160
Mountain Bike:	\$10	\$20
Banana Bike:	\$10	\$20

### Hourly Fee:

### Daily Fee:

### Activities:

Miniature Golf:	\$5 / hour
Paintball Kit:	\$45
Paintball Ammo:	\$12 - \$45
Cornhole:	\$10 / hour

### Fees:

### Daily Fee:

N/A
N/A
N/A
\$20

\*Must have a current boater safety card.



## LEGEND

	Frisbee Tee		Tent Camping		Point of Interest		Parking
	Frisbee Basket		Marina		Swimming		Fishing
	Cabin		Mini-Golf		Shopping/ATM		Picnic Area
	Playground		Boat Launch		RV Parking		Restroom
	Shower		Paved Road		Gate		Group Use Area



**FOR MORE INFORMATION**

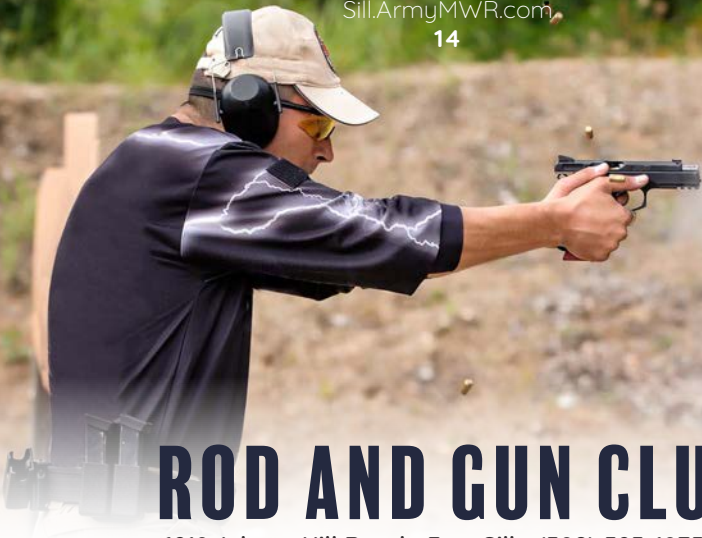
(580) 442-5858 • visit [Sill.ArmyMWR.com](http://Sill.ArmyMWR.com)





## LOCATION/ACCESS INFORMATION

Located 12 miles NW of the main post and can be reached by vehicles using Apache Gate from HWY 49 and through Sheridan Gate.



# ROD AND GUN CLUB

6218 Adams Hill Road • Fort Sill • (580) 595-1875

Bring your firearms and ammunition for a day of target practice. The range features 16 rifle lanes, 6 standard pistol lanes, a self-defense pistol steel course, a tactical engagement course, and 5 stand shotgun areas.

Help make the Rod & Gun Club a success by purchasing a **yearly membership for \$150**. You'll receive your name on the membership plaque at the club, no daily fee, and invitations to "Member Only" events.

## HOURS OF OPERATION

### APRIL - SEPTEMBER:

**Thursday - Friday:** 4 pm - 8 pm  
**Saturday - Sunday:** 10 am - 6 pm  
**Lunchtime Shooting:** 11 am -1 pm

### OCTOBER - MARCH:

**Thursday - Friday:** 4 pm - Dusk  
**Saturday - Sunday:** 10 am - 6 pm



Fees (April - September)	Daily
Members	Free
Non-Members	\$12 Standard Pistol and Rifle Lanes \$18 Defensive Steel target course \$10 5 Stand Shotgun 25 Clays

Fees (October - March)	Daily
Members	Free
Non-Members	\$6 Standard Pistol and Rifle Lanes

# CLASSES/COURSES OFFERED:

Oklahoma Self  
Defense Act Course  
1<sup>st</sup> Saturday of the Month

**\$65**

NRA Basic  
Pistol Course  
2<sup>nd</sup> Saturday of the Month

**\$50**

NRA Basic  
Rifle Course  
3<sup>rd</sup> Saturday of the Month

**\$50**

NRA Range Safety  
Officer Course  
4<sup>th</sup> Saturday of the Month

**\$45**



## STAY UP-TO-DATE!

Scan the QR Code and become a member of Fort Sill Family & MWR's Rod & Gun Club Facebook Group to stay up-to-date on Rod & Gun Club events, classes, courses and specials!

## DID YOU REGISTER YOUR FIREARMS? ✓

Patrons must have their firearms registered on the installation prior to visiting the range. Please visit the Visitor Control Center without your firearm(s) to fill out the required forms.

**Address:** T6701 Sheridan Road





# QUICK DIRECTORY

Outdoor Recreation • Fort Sill • Oklahoma

## OUTDOOR ADVENTURE CENTER

2503 Ringgold Rd • (580) 442-0930

Pages: 2 - 7

## PATRIOT CLUB

500 Upton Rd • (580) 442-5300

Page: 7

## RECREATIONAL PARKS & RV PARKS

(580) 442-0930

Page: 8 - 9

## LAKE ELMER THOMAS RECREATION AREA

7463 Deer Creek Canyon Rd • (580) 442-5858

Pages: 7, 8 and 10 - 13

## ROD & GUN CLUB

6218 Adams Hill Rd • (580) 595-1875

Pages: 14 - 15

