



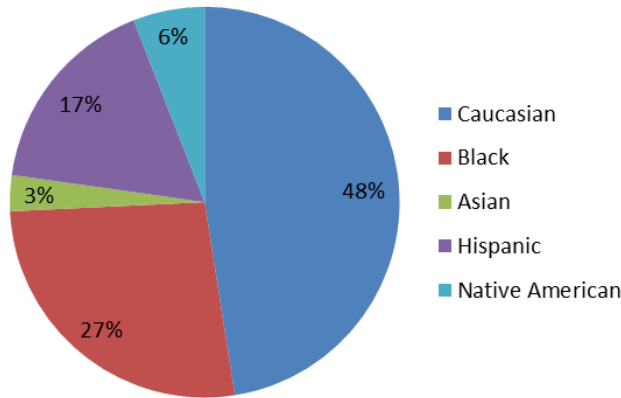
LAWTON PUBLIC SCHOOLS

PO Box 1009
753 NW Fort Sill Blvd.
Lawton OK 73502
580-357-6900
<http://www.lawtonps.org/>

SCHOOL/COMMUNITY CHARACTERISTICS

SCHOOLS

EISENHOWER HS	2
LAWTON HIGH	3
MACARTHUR HS	4
MIDDLE SCHOOLS	5
ELEMENTARY SCHOOLS	6



Student/teacher ratio **15:1**

Total Enrollment	14,747
Elementary (Pre-K–5th) (17 Elementary Schools)	7,202
Middle School (6th–8th) (4 Middle Schools)	3,091
High School (9th–12th) (3 High Schools)	4,107

Four Guiding Principles

1. Prepare Career Bound Citizens
2. Shared Professional Ideals
3. Communication, Collaboration & Transparency
4. Healthy & Fit Lifestyles

22% of students are Unformed Military Dependents

PERFORMANCE MEASURES

	Lawton	Oklahoma
Students identified as Gifted/Talented	8.6%	14.5%
1st-3rd Graders Receiving Reading Remediation	48.2%	37.9%
Students in Special Education	18.3%	15.8%
Students as English Language Learners	4.3%	7.2%

OKLAHOMA GRADUATION REQUIREMENTS—23 CREDITS

Subject	Requirement (grades 9-12)
Language Arts	4 Units including English I, II, III, IV or other English course (including AP English courses) approved for college admission
Mathematics	3 units including Algebra I, Algebra II, Geometry, Trigonometry, Math Analysis, Calculus, AP math courses or any math course with content and/or rigor above Algebra I and approved for college admission.
Laboratory Science	3 units including Biology, Chemistry, Physics or other Lab Science course with content and/or rigor equal to or above Biology (including AP science courses) and approved to meet college admission requirements
History/Citizenship	3 units including US History, 1/2 unit US Government, 1/2 unit Oklahoma History plus 1 unit approved to meet college admission requirements
World or Non-English Language	2 units including 2 units of the SAME foreign or non-English Language OR 2 units of Computer Technology)
Fine Art/Speech	1 unit (Music, Art, Drama or Speech)
Electives	At least 7 units including personal financial literacy and CPR/AED

College and Career Readiness Assessments

11th grade students will take the ACT Test at school (at no cost) and a Science content test. A student who has already completed a Science Assessment (Biology or higher) can be exempt from the Science Assessment. The ACT is required.

Note: These end of instructions tests are NOT tied to graduation or final course grades

EISENHOWER HIGH SCHOOL ENROLLMENT 1,249



Pre-AP Courses	AP Courses	Fine Arts/Music/Drama	Electives
Pre-AP Algebra II	AP Biology	Art I, II & III	Computer Applications I & II
Pre-AP Biology	AP Calculus	Art 3D Drawing	Desktop Publishing
Pre-AP Calculus	AP Chemistry	Art—Printmaking	Media Production
Pre-AP Chemistry	AP Computer Science	Art—Mixed Media	Web Design I
Pre-AP Computer Science	AP Env. Science	Art—Painting	Intro to Animal Science
Pre-AP Geometry	AP Human Geography	Drama I, II & III	Livestock Production
Pre-AP English I	AP Language/Comp.	Stage Crafts I & II	Intro to Nat. Resources
Pre-AP English II	AP Literature/Comp.	Vocal Music/Concert Choir	Intro to Horticulture
Pre-AP Spanish I	AP Microeconomics	Women's Honor Choir	Psychology Sociology
Pre-AP Spanish II	AP Macroeconomics	Show Choir III	Economics I & II
Pre-AP Spanish III	AP Psychology	Music Appreciation	Family & Consumer
Pre-AP Trigonometry	AP Physics I	Marching/Symphonic	Sciences IA & IB
	AP Physics II	Band	Food Prep./Nutrition I & II
	AP Spanish Language	Orchestra II & III	Chemistry of Food
	AP Statistics		ROTC
	AP US History		Cheerleading Dance
	AP World History		Weight Training
			Desktop Publishing
			Internship/Mentorship

2016 School Report Card

74 C

For details consult the State Department of Education website:

<http://ok.gov/sde/f-grading-system>

EXTRACURRICULAR ACTIVITIES

Highlights:

Eisenhower High School was one of only five schools in the US recognized as a 2017 National School of Character

- National Math and Science Initiative School of the Year—2012

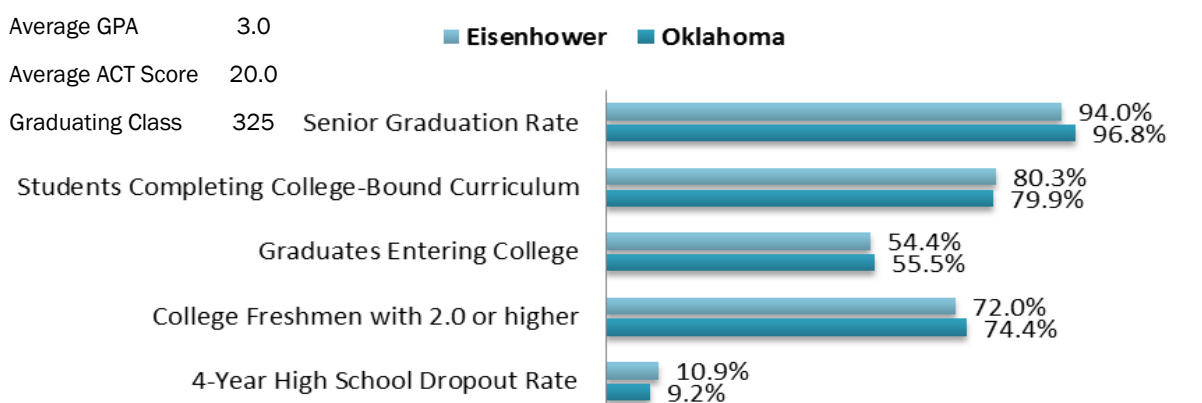
Student Accomplishments:

- 2 National Merit Finalists –2017
- 1 Academic All-State recipient—2017
- 2 National Hispanic Achievement recipient—2017
- 7 Students scored 30+ on ACT— 2018
- 15 Oklahoma Academic Scholars—2018
- 2015 State 6-A Boys Basketball Champs

Boys Athletics Girls Athletics Student Activities/Organizations

Baseball	Basketball	African American	Key Club
Basketball	Bowling	Art Band	Media
Bowling	Cheer	BBB BIB	Military Child
Cross Country	Cross Country	Choir	Newspaper
Football	Golf	Decathlon	Native American
Golf	POM	Drama	OK YMCA Govt.
Soccer	Soccer	FBLA	Orchestra
Swimming	Softball	FCA FCCLA FFA	Spanish
Tennis	Swimming	Fencing	Step Team
Track	Tennis	Geography	Student Council
Wrestling	Track	Honor Society	Website Staff
	Volleyball	JROTC	Yearbook Staff

SENIOR STATISTICS



LAWTON HIGH SCHOOL ENROLLMENT 1,734



2016 School Report Card

65 D

For details consult the State Department of Education website:

<http://ok.gov/sde/f-grading-system>

Pre-AP Courses

Pre-AP Algebra II
Pre-AP Biology
Pre-AP Chemistry
Pre-AP Calculus
Pre-AP English I
Pre-AP English II
Pre-AP Geometry
Pre-AP Oklahoma History
Pre-AP Trigonometry

AP Courses

AP Biology
AP Calculus
AP Chemistry
AP Computer Science
AP English Language & Composition
AP English Literature & Composition
AP European History
AP Psychology
AP Statistics
AP US History
AP World History

Fine Arts/Music/ Drama

Art Fundamentals I, II & III
Painting Drawing
Ceramics/Pottery
Cartooning
Figure Painting
Orchestra I & II
Band (Marching/Symphonic)
Show Choir II/III
Vocal Music
Music Appreciation
Acting Speech I
Drama I, II & III
Speech I
Stage Production I & II
Media Broadcasting I & II

Electives

Journalism I Newspaper
Desktop Pub/Yearbook
JROTC I, II, III & IV
JROTC Advanced I & II
Cheerleading
Boys/Girls Weights
Psychology Sociology
Computer Applications I & II
Computer Programming
Web Design I, II & III
Agriculture Communications
Agriscience
Intro to Animal Science
Livestock Production
Horticulture
Internship/Mentorship
Intro to Engineering Design
Principles of Engineering

Foreign Language

French I, II & III
Spanish I, II, III & IV

Highlights:

US News & World Report rated Lawton High as the 18th best High School in Oklahoma in 2017

- 3 students scored 30+ on ACT—2018
- 1 Academic All-State recipient—2017
- 7 Oklahoma Academic Scholars—2018
- 1 National Hispanic Scholar—2017
- Advanced Placement (AP) Data
2013-2015—42% of students tested received college credit for AP course work
- 2013—2016 State 6A Football Playoff Qualifier

EXTRACURRICULAR ACTIVITIES

Boys Athletics

Baseball
Basketball
Bowling
Cross Country
Football
Golf soccer
Swim
Tennis
Track
Wrestling

Girls Athletics

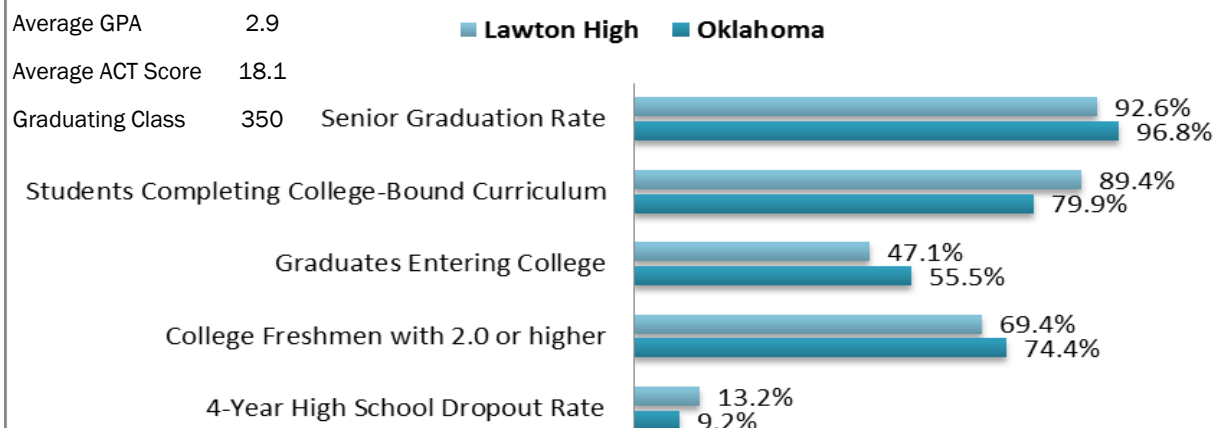
Basketball
Bowling
Cheerleading
Cross Country
Golf
Soccer
Softball
Swim
Tennis
Track
Volleyball

Student Activities/Organizations

Academic Team
Art Club
Band Bell Guards
Cheerleading
Choir Crime Stoppers
Drama FCA FFA
French Club
High Steppers
JROTC Key Club
Media Production

Military Child Coalition
National Honor Society
Native American Club
Open Doors Orchestra
Spanish Club
Stage Production
Student Council
Upward Bound
Web Design
Yearbook

SENIOR STATISTICS



MACARTHUR HIGH SCHOOL

ENROLLMENT: 1,124

**Pre-AP Courses**

Pre-AP Algebra II
Pre-AP Biology
Pre-AP Calculus
Pre-AP Chemistry
Pre-AP English I
Pre-AP English II
Pre-AP Geometry
Pre-AP Physics
Pre-AP Trigonometry

Foreign Language

German I & II
Spanish I & II

AP Courses

AP Language/Composition
AP Literature/Composition
AP Biology
AP Chemistry
AP Physics
AP Environmental Science
AP Computer Science
AP Statistics
AP Calculus
AP Music Theory
AP Spanish

Fine Arts/Music/Drama

Art I, II, III, IV
Drawing
Ceramics/Pottery
Stage Crafts
Marching/Symphonic Band
Music Appreciation
Orchestra II & III
Vocal Music
Show Choir I, II & III
Drama
Speech

Electives

Newspaper Yearbook
Computer Application I & II
Web Design
Highlanderettes/Dance
Health/Safety Weights
Cheerleading (JV/Varsity)
Agriscience
Intro to Animal Science
Livestock Production
JROTC
Career Exploration
Intro to Engineering Design
Principles of Engineering

**2016
School Report Card**
79 C+

For details consult the
State Department of
Education website:

<http://ok.gov/sde/t-grading-system>

Highlights:

- 1 National Merit Finalist
- 6 Students scored 30+ on ACT—2018
- 11 Oklahoma Academic Scholars
- 2016 State 5-A Wrestling Champions
- 2015—93 AP Scholars (received college credit for AP coursework)
- 2013 State Playoffs—Football, Girls Soccer & Fast Pitch Softball
- 2014 State Runner-up—Wrestling
- 2014 State 5A Football Champions

EXTRACURRICULAR ACTIVITIES**Boys Athletics**

Archery
Baseball
Basketball
Bowling
Cross Country
Football
Golf
Soccer
Swim
Tennis
Track
Wrestling

Girls Athletics

Archery
Basketball
Bowling
Cross Country
Golf
Soccer
Softball
Swim
Tennis
Track
Volleyball

Student Activities/Organizations

Book Club
Crime Stoppers
Fellowship of Christian Athletes
German Club
Key Club
Military Child Club
Multi-cultural Awareness Club
National Honor Society
Partners Club
Prideline
Robotics Club
Student Council

Academic Team
Band
Vocal Music
Orchestra
Highlanderettes
Cheerleading
JROTC
Decathlon
FFA
Newspaper
Yearbook

SENIOR STATISTICS

Average GPA 3.3

Average ACT Score 19.6

Graduating Class 275

Senior Graduation Rate

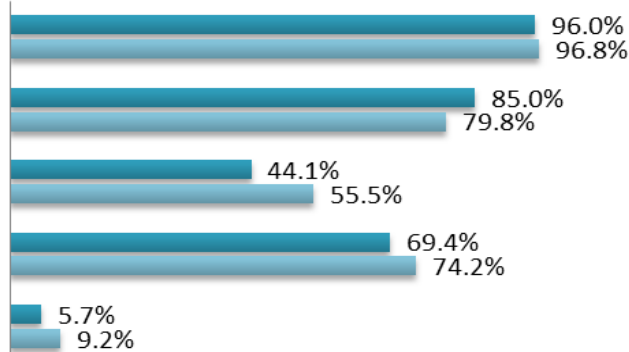
Students Completing College-Bound Curriculum

Graduates Entering College

College Freshmen with 2.0 or higher

4-Year High School Dropout Rate

■ MacArthur ■ Oklahoma



MIDDLE SCHOOLS

6TH—8TH GRADE

	Students	Honors & Pre-AP Courses	Electives	Student Activities	Boys Athletics	Girls Athletics
Central MS School Report Card 67—D+ Modified Dress Code/Uniform	736	Honors Reading Honors Language Arts Honors Math Honors Science	Computer Keyboarding Technology Engineering Fun with Spanish Art PE Band Orchestra Vocal Music	Academic Team Art Club Anime Book Club Book Fairies Cheerleading Chess Club Crime Stoppers Media & Technology FCA Leadership Team Mystery Riders NJHS Military Student Club Scrapbooking Pep Club Science Club	Baseball Basketball Football Golf Tennis Track Wrestling	Basketball Golf Softball Tennis Track Volleyball
Eisenhower MS School Report Card 71—C—	858	Honors Language Arts (7/8) Algebra 1 (8) Geometry (8) Science (7/8) Reading (7/8) Pre-Algebra (7)	Art Band Choir Keyboarding/Typing Orchestra PE Spanish Speech Technology Education Yearbook (8th only) Ag Science (8th only) Skills for Adolescents (8th only)	Art Academic Team Builder's Club Chess Club Crime Stoppers Fellowship of Christian Athletes Military Child Club Orchestra Radio Club Technology Student Assoc.	Baseball Basketball Football Golf Tennis Track Wrestling	Basketball Golf Softball Tennis Track Volleyball
MacArthur MS School Report Card 78—C+ Great Expectations Model School 2008-2012	788	Honors Reading Honors English Honors Math Honors Science	Art Band Orchestra Vocal Music Speech/Drama Robotics/Engineering Spanish Culture Keyboarding Study Skills PE Agriculture (8th Grade) Spanish (8th Grade)	Academic Team Art Club Builders Club Cheer Chess Club Choir FCA Military Child Club Lil Mac Maniacs Unify Partners Robot Club	Archery Baseball Basketball Football Golf Tennis Track Wrestling	Archery Basketball Cheerleading Golf Softball Tennis Track Volleyball
Tomlinson MS School Report Card 72—C— Modified Dress Code/Uniform	709	Honors Science Honors Pre-Algebra Honors Algebra I Pre-AP Language Arts Pre-AP Reading	4-Step Writing Art Band Computers Creative Writing Life Mgt./Pers. Dev. PE Spanish Tech Ed Music Yearbook	Academic Team Cheer Choir FCCLA Military Child Club National Jr. Honor Society Orchestra Partners Club Student Council	Baseball Basketball Football Golf Tennis Track Wrestling	Basketball Cheerleading Golf Softball Tennis Track Volleyball

8TH GRADE READING PROFICIENCY/OKLAHOMA DRIVERS LICENSE

Any person under the age of 18 wishing to apply for a drivers' license or permit in Oklahoma shall successfully demonstrate a satisfactory reading ability at the 8th grade level (unless student in on an IEP program). Individuals under the age of 18 who have previously demonstrated reading competency in another state may submit the results of such tests to the State Department of Education for verification and approval. Students who have not passed a reading proficiency test in another state should check with school officials for the next scheduled alternate assessment opportunity.

Elementary Schools	Phone	Pre-K	**Modified Dress Code (Uniform)	Ext. Day 7:15-8:30am and 4-5:30pm	##Special Services	Students	2016 School Report Card
Almor West	580-536-6006	Full Day	Yes	Yes	PSC, PSY, MFLC	300	87—B+
Carriage Hills	580-248-6161	Full Day	Yes	Yes	SP, MFLC	351	76—C
Cleveland	580-353-8861	Full Day	Yes		SP	324	86—B
Crosby Park***	580-353-7107	Full Day	Yes	Yes	SP, PT, OT, MFLC	301	85—B
Edison	580-536-4223	Full Day	Yes	Yes	SP, MFLC	462	81—B—
Eisenhower	580-355-4599		Yes	AM only	MFLC	301	72—C-
Freedom	580-713-0600	Full Day	Yes		SP, PSC, MFLC	1,242	92—A—
Hugh Bish	580-248-2244		Yes	Yes	SP, MFLC	336	83—B—
John Adams	580-353-7983		Yes	Yes		251	89—B+
Learning Tree (PreK)	580-355-6197	Full Day	Yes		ST, OT, SP, MFLC	211	NA
Lincoln	580-355-4799	Full Day	Yes		PSY, SP	372	80—B—
Pat Henry	580-355-2617	Full Day	Yes		SP	527	81—B—
Pioneer Park	580-355-5844	Full Day	Yes	Yes	SP, MFLC	393	77—C+
Ridgecrest	580-355-6033	Full Day	Yes		ST	540	81—B—
Sullivan Village	580-355-0800	Full Day	Yes	Yes	MFLC	470	79—C+
Washington	580-353-6299	Full Day	Yes		SP, PSY	219	70—C—
Whittier***	580-355-5238	Full Day	Yes	Yes	SP	298	72—C—
Woodland Hills***	580-536-7991	Full Day	Yes	Yes	SP, MFLC	494	90—A—

All Elementary Schools utilize a Modified Dress Code/Uniform: Knit polo style shirt with collar (short or long sleeve), sweater, cardigan, sweatshirt or hoodie in any solid color (no emblem) worn with black, navy or khaki slacks, shorts, skirts or jumpers. NO DENIM is permitted (some elementary schools allow jeans with a school t-shirt on Friday)

ST-Speech Therapist/Asst.; SP – Speech Pathologist/Asst.; PT – Physical Therapist/Asst.; OT – Occupational Therapist/Asst.; PSY-Psychologist; PSC – Psychometrist; MFLC—Military Family Life Counselor

***** Great Expectations® Model School**

Great Expectations® Schools have high expectations of students and faculty and strive to create an environment where all children can learn. They encourage building learner self-esteem, creating a climate of mutual respect and foster teacher innovation.

SPECIAL SERVICES**580-353-0334****102 E GORE, LAWTON OK**

The Special Services Center is the central office for special education services in Lawton Public Schools. This office coordinates the delivery of special education and related services for approximately 2,500 students with disabilities under the Individuals with Disabilities Education Act (IDEA). Lawton Public Schools provides special education and related services to all eligible special education students ranging from age 3 through 21. Lawton public schools currently provides services to children with disabilities in the following federal and state categories:

- Autism
- Deaf/Blind
- Deafness/Hearing Impairment
- Developmental Delay
- Emotional Disturbance
- Intellectual Disability
- Orthopedic Impairment
- Other Health Impairment
- Multiple Disabilities
- Specific Learning Disabilities
- Speech and/or Language Impaired
- Traumatic Brain Injury
- Visual Impairment

Lawton Public Schools provides the following related services as recommended by the IEP team:

- Occupational Therapy
- Nursing Services
- Physical Therapy
- Speech Therapy
- Vision Therapy
- Special Transportation

SPECIAL EDUCATION SERVICES

Special Education services range from early childhood special education services to an extended high school transition program for students ages 18-21. Lawton Public Schools offers a wide range of service delivery options for consideration by IEP teams, including:

- Regular education classes with accommodations
- Co-teaching in a regular classroom
- Resource rooms/supplementary services
- Direct instruction
- Self-Contained special education Classes

BEFORE YOU ENROLL:

Please call Special Services (580-353-0334) before enrolling in any Lawton school. Upon review of your child's records, recommendations and decisions will be made regarding the best placement and school for your child.

1. Please bring your child's current education records including all special education records. For military families, be sure to hand carry your child's educational records—do not pack them with your household goods.
2. Bring a copy of the child's most current IEP. This is the Individualized Education Program that is developed for every eligible special education student by his/her public school. Every eligible student has an IEP.
3. Further records are helpful, but not necessary. These would include:
 - Special education eligibility documentation
 - Psycho-educational evaluations or psychological evaluations
 - Current medical records (including information about prescribed medications)
 - Academic reports/report cards from previous school
 - Records of previous placement (type of special education class in which the child received services)
 - Attendance records

EXCEPTIONAL FAMILY MEMBER PROGRAM**580-442-4916**

The Army Community Service (ACS) Exceptional Family Member Program (EFMP) works with other military & civilian agencies to provide comprehensive & coordinated community support, educational, housing, personnel, & medical services to Active Duty Soldiers and Family members enrolled in the program. Per AR 608-75, enrollment into the EFMP is mandatory for Soldiers who have a Family member with any medical and/or educational need. If dual military, both Soldiers must enroll in the program.

GIFTED AND TALENTED PROGRAMS

Nomination

Nominations of students for the Gifted and Talented Program are accepted from:

- Professional Educators
- Parents
- Community Members
- Peers
- Self
- Others as appropriate

Screening

Data will be collected from the following sources:

- Standardized ability and achievement tests (a score at the 97th percentile or above results in automatic placement, with parental approval)
- Student achievement within curriculum
- Student work portfolios
- Student achievement outside the school's curriculum

Mission

The mission of the Gifted and Talent program is to develop and challenge students who give evidence of high performance capability as defined by state law in the areas of:

- Intellectual Ability
- Creative Ability
- Leadership Ability
- Artistic Ability
- Specific Academic Ability

TRANSPORTATION

Lawton Public Schools provides transportation for students who live on Fort Sill to the following schools:

- **Pre-K—5th Grade: Freedom Elementary**
- **6th—8th Grade: Central Middle School**
- **9th-12th Grade: Lawton High**

The following Housing Areas on Fort Sill are within 1 mile of Freedom Elementary and will not be transported to Freedom Elementary by Lawton Public Schools.

- Geronimo Acres
- Patriot Estates

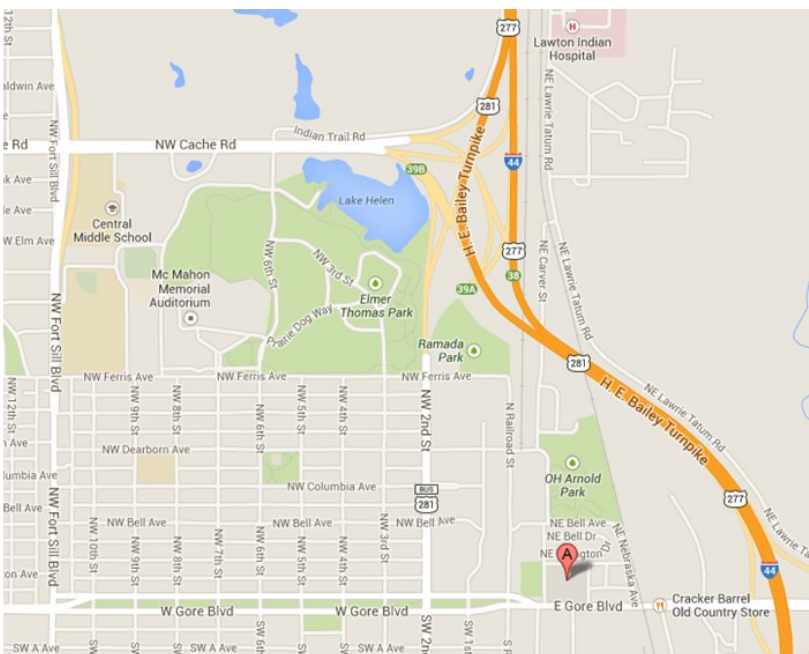
Eligibility to ride a Bus

Lawton Public Schools students who legally reside within the boundaries of the school district and live more than 1 1/2 miles from the school at which they are enrolled are eligible for bus services.

Bus stop locations and approximate pickup/drop-off times are posted on the Lawton Public Schools web site (www.lawtonps.org) after August 1 each year. These times will likely be adjusted during the first two weeks of school as bus routes are finalized.

Students who transfer within the Lawton Public Schools district and those who transfer into the district (from another school district) are not eligible to ride a district school bus and must provide their own transportation.

Students must ride the same bus every day.



**LAWTON PUBLIC SCHOOLS
ENROLLMENT CENTER**
102 E GORE BLVD. LAWTON OK
MONDAY-FRIDAY 8AM-3PM
PHONE: 580-355-2214

All students who are new to the Lawton Public Schools district must enroll for the first time at the LPS Enrollment Center. The following documents are required for enrollment:

- Official State Issued Birth Certificate (hospital souvenir copies not accepted)
- Complete immunization record
- Proof of residency (utility/service bill, lease/mortgage agreement or verification from Fort Sill Housing of status on wait list).