

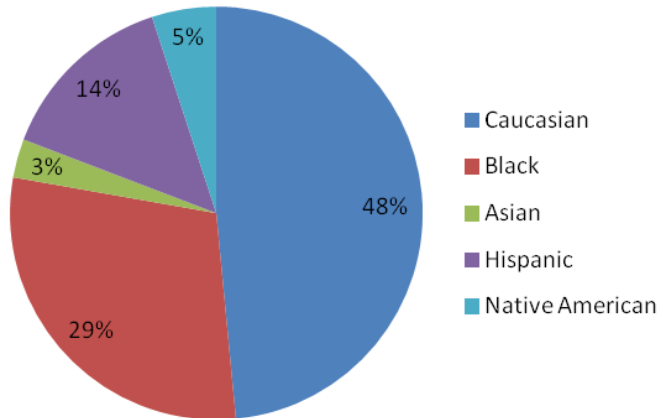
LAWTON PUBLIC SCHOOLS

PO Box 1009
753 NW Fort Sill Blvd.
Lawton OK 73502
580-357-6900
<http://www.lawtonps.org/>

SCHOOL/COMMUNITY CHARACTERISTICS

SCHOOLS

EISENHOWER HS	2
LAWTON HIGH	3
MACARTHUR HS	4
MIDDLE SCHOOLS	5
ELEMENTARY SCHOOLS	6



Student/teacher ratio **15:1**

Total Enrollment	15,866
Elementary (Pre-K–5th) (23 Elementary Schools)	8,217
Middle School (6th–8th) (4 Middle Schools)	3,380
High School (9th–12th) (3 High Schools)	4,289

23% of students are Unformed Military Dependents

1. Recipient of \$2.5 million grant from DoD to enhance math, science & technology education
2. \$37 million grant for Freedom Elementary

PERFORMANCE MEASURES

	Lawton	Oklahoma
Students identified as Gifted/Talented	8.7%	14.8%
1st-3rd Graders Receiving Reading Remediation	44.8%	34.8%
Students in Special Education	17.2%	15.0%
Parents attending at least one parent/teacher conf.	75.0%	74.0%

OKLAHOMA GRADUATION REQUIREMENTS

Subject	Requirement (grades 9-12)
English	4 Units (English I, II, III, IV or other English course approved for college admission)
Mathematics	3 units (math courses taken prior to 9th grade do not count toward these units)
Laboratory Science	3 units (Biology, Chemistry, Physics or other Lab Science course approved to meet college admission requirements)
History/Citizenship	4 units (US History, 1/2 unit US Government, 1/2 unit Oklahoma History, Financial Literacy + 1 unit approved to meet college admission requirements)
Foreign Lang. Technology	2 units (2 units of the SAME foreign/non-English Language OR 2 years of Computer Technology)
Fine Art/Speech	1 unit (Music, Art, Drama or Speech)
Electives	At least 6 units including Personal Financial Literacy

End of Instruction (EOI) Tests

Every student must demonstrate mastery of the state academic content standards in the following subject areas to graduate from a public high school with a standard diploma:

Must pass these two (EOI) Tests:

- English II
- Algebra I

Must pass two of the following (EOI) Tests:

- English III
- Algebra II
- Geometry
- Biology I
- U.S. History

EISENHOWER HIGH SCHOOL ENROLLMENT 1,378

Pre-AP Courses	AP Courses	Fine Arts/Music/Drama	Electives
Pre-AP Computer Science	AP Computer Science	Art I, II & III	Computer Applications I & II
Pre-AP English I	AP Language/Comp.	Art 3D Drawing	Desktop Publishing
Pre-AP English II	AP Literature/Comp.	Art—Printmaking	Media Production
Pre-AP Spanish II	AP Spanish Language	Art—Mixed Media	Web Design I
Pre-AP Spanish III	AP Statistics	Art—Painting	Intro to Animal Science
Pre-AP Geometry	AP Calculus	Drama I, II & III	Livestock Production
Pre-AP Algebra II	AP Env. Science	Stage Crafts I & II	Intro to Nat. Resources
Pre-AP Calculus	AP Biology	Vocal Music/Concert Choir	Intro to Horticulture
Pre-AP Trigonometry	AP Chemistry	Women's Honor Choir	Psychology Sociology
Pre-AP Biology	AP Physics I	Show Choir III	Economics I & II
Pre-AP Chemistry	AP Physics II	Music Appreciation	Family & Consumer
Pre-AP Spanish I	AP US History	Marching/Symphonic Band	Sciences IA & IB
Pre-AP Spanish II	AP World History	Orchestra II & III	Food Prep./Nutrition I & II
	AP Human Geography		Chemistry of Food
	AP Psychology		ROTC
	AP Microeconomics		Cheerleading Dance
	AP Macroeconomics		Weight Training
	AP Spanish Language		Desktop Publishing
			Internship/Mentorship

**2015
School Report Card****81 B—**

For details consult the
State Department of
Education website:

<http://ok.gov/sde/t-grading-system>

Highlights:

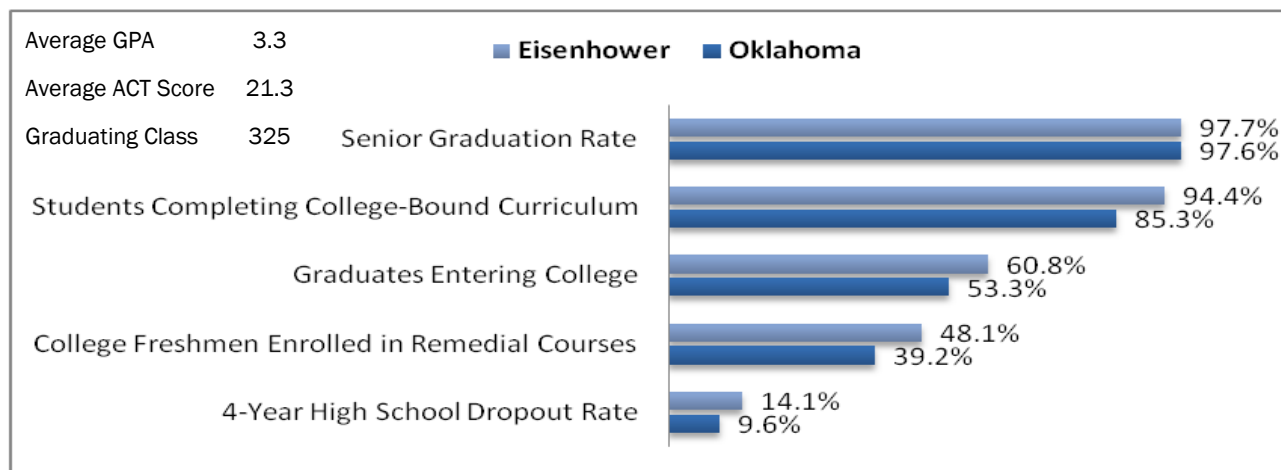
- National Math and Science Initiative
School of the Year—2012

Student Accomplishments:

- 3 National Merit Scholars—2015
- 2 National Merit Finalists –2014
- 1 National Merit Commended Student
- 16 Students scored 30 or higher on ACT
- 2015 State 6-A Boys Basketball Champs

EXTRACURRICULAR ACTIVITIES

Boys Athletics	Girls Athletics	Student Activities/Organizations			
Baseball	Basketball	African American	Key Club		
Basketball	Bowling	Art Band	Media		
Bowling	Cheer	BBB BIB	Military Child		
Cross Country	Cross Country	Choir	Newspaper		
Football	Golf	Decathlon	Native American		
Golf	POM	Drama	OK YMCA Govt.		
Soccer	Soccer	FBLA	Orchestra		
Swimming	Softball	FCA FCCLA FFA	Spanish		
Tennis	Swimming	Fencing	Step Team		
Track	Tennis	Geography	Student Council		
Wrestling	Track	Honor Society	Website Staff		
	Volleyball	JROTC	Yearbook Staff		

SENIOR STATISTICS

LAWTON HIGH SCHOOL ENROLLMENT 1,801

Pre-AP Courses	AP Courses	Fine Arts/Music/ Drama	Electives
Pre-AP English I	AP English III	Art Fundamentals I, II & III	Journalism I Newspaper
Pre-AP English II	AP English IV	Painting Drawing	Desktop Pub/Yearbook
Pre-AP Geometry	AP Calculus	Ceramics/Pottery	JROTC I, II, III & IV
Pre-AP Algebra II	AP Statistics	Cartooning	JROTC Advanced I & II
Pre-AP Calculus	AP Biology	Figure Painting	Cheerleading
Pre-AP Trigonometry	AP Chemistry	Orchestra I & II	Boys/Girls Weights
Pre-AP Biology I	AP US History	Band (Marching/Symphonic)	Psychology Sociology
Pre-AP Chemistry	AP World History	Show Choir II/III	Computer Applications I & II
Pre-AP Oklahoma History	AP European History	Vocal Music	Computer Programming
	AP Psychology	Music Appreciation	Web Design I, II & III
	AP Computer Science	Acting Speech I	Agriculture Communications
		Drama I, II & III	Agriscience
		Stage Production I & II	Intro to Animal Science
		Media Broadcasting I & II	Livestock Production
			Horticulture
			Internship/Mentorship
			Intro to Engineering Design
			Principles of Engineering

Foreign Language

French I & II
Spanish I, II, III & IV

**2015
School Report Card****77 C+**

For details consult the
State Department of
Education website:

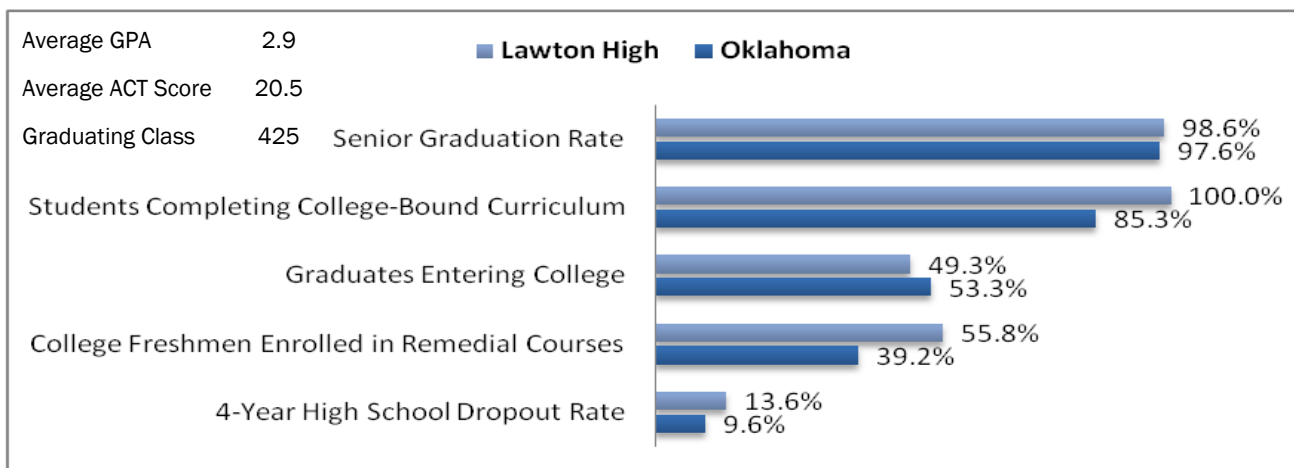
<http://ok.gov/sde/f-grading-system>

Highlights:

- 1 National Merit Outstanding Participant
- 1 National Merit Commended Student
- 7 students scored 30 or higher on ACT
- Advanced Placement (AP) Data
2013-2015—42% of students tested
received college credit for AP course
work
- 2013—2015 State 6A Football Playoff
Qualifier
- 2014 State 6A Football Runner-up

EXTRACURRICULAR ACTIVITIES

Boys Athletics	Girls Athletics	Student Activities/Organizations	
Baseball	Basketball	Academic Team	Military Child Coalition
Basketball	Bowling	Art Club	National Honor Society
Bowling	Cheerleading	Band Bell Guards	Native American Club
Cross Country	Cross Country	Cheerleading	Open Doors Orchestra
Football	Golf	Choir Crime Stoppers	Spanish Club
Golf soccer	Soccer	Drama FCA FFA	Stage Production
Swim	Softball	French Club	Student Council
Tennis	Swim	High Steppers	Upward Bound
Track	Tennis	JROTC Key Club	Web Design
Wrestling	Track	Media Production	Yearbook
	Volleyball		

SENIOR STATISTICS

MACARTHUR HIGH SCHOOL

ENROLLMENT: 1,110

Pre-AP Courses

PAP English I
 PAP English II
 PAP Biology
 PAP Chemistry
 PAP Physics
 PAP Geometry
 PAP Algebra II
 PAP Calculus
 PAP Trigonometry

AP Courses

AP Language/Composition
 AP Literature/Composition
 AP Biology
 AP Chemistry
 AP Physics
 AP Environmental Science
 AP Computer Science
 AP Statistics
 AP Calculus
 AP Music Theory
 AP Spanish

Foreign Language

German I & II
 Spanish I & II

Fine Arts/Music/Drama

Art I, II, III, IV
 Drawing
 Ceramics/Pottery
 Stage Crafts
 Marching/Symphonic Band
 Music Appreciation
 Orchestra II & III
 Vocal Music
 Show Choir I, II & III
 Drama Speech

Electives

Newspaper Yearbook
 Computer Application I & II
 Web Design
 Highlanderettes/Dance
 Health/Safety Weights
 Cheerleading (JV/Varsity)
 Agriscience
 Intro to Animal Science
 Livestock Production
 JROTC
 Career Exploration
 Intro to Engineering Design
 Principles of Engineering

2015
School Report Card

86 B

For details consult the
 State Department of
 Education website:

<http://ok.gov/sde/f-grading-system>

Highlights:

- 8 students scored 30 or higher on ACT
- 2015—93 AP Scholars (received college credit for AP coursework)
- 2013 State Playoffs—Football, Girls Soccer & Fast Pitch Softball
- 2014 State Runner-up—Wrestling
- 2014 State 5A Football Champions

EXTRACURRICULAR ACTIVITIES

Boys Athletics

Archery
 Baseball
 Basketball
 Bowling
 Cross Country
 Football
 Golf
 Soccer
 Swim
 Tennis
 Track
 Wrestling

Girls Athletics

Archery
 Basketball
 Bowling
 Cross Country
 Golf
 Soccer
 Softball
 Swim
 Tennis
 Track
 Volleyball

Student Activities/Organizations

Book Club
 Crime Stoppers
 Fellowship of Christian Athletes
 German Club
 Key Club
 Military Child Club
 Multi-cultural Awareness Club
 National Honor Society
 Partners Club
 Prideline
 Robotics Club
 Student Council

Academic Team
 Band
 Vocal Music
 Orchestra
 Highlanderettes
 Cheerleading
 JROTC
 Decathlon
 FFA
 Newspaper
 Yearbook

SENIOR STATISTICS

Average GPA 3.1

Average ACT Score 21.0

Graduating Class 250

Senior Graduation Rate

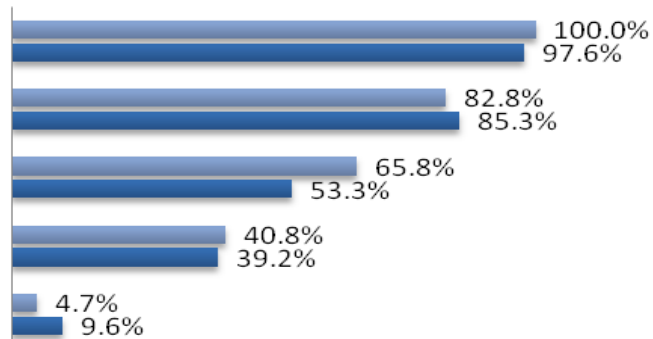
Students Completing College-Bound Curriculum

Graduates Entering College

College Freshmen Enrolled in Remedial Courses

4-Year High School Dropout Rate

■ MacArthur ■ Oklahoma



MIDDLE SCHOOLS

6TH—8TH GRADE

	Students	Honors & Pre-AP Courses	Electives	Student Activities	Boys Athletics	Girls Athletics
Central MS School Report Card 69—D+	750	Honors Reading Honors Language Arts Honors Math Honors Science	Computer Keyboarding Technology Engineering Fun with Spanish Art PE Band Orchestra Vocal Music	Academic Team Art Club Anime Book Club Book Fairies Cheerleading Chess Club Crime Stoppers Media & Technology FCA Leadership Team Mystery Riders NJHS Military Student Club Scrapbooking Pep Club Science Club	Baseball Basketball Football Golf Tennis Track Wrestling	Basketball Golf Softball Tennis Track Volleyball
Eisenhower MS School Report Card 74—C	1,008	Honors Language Arts (7/8) Algebra 1 (8) Geometry (8) Science (7/8) Reading (7/8) Pre-Algebra (7)	Art Band Choir Keyboarding/Typing Orchestra PE Spanish Speech Technology Education Yearbook (8th only) Ag Science (8th only) Skills for Adolescents (8th only)	Art Academic Team Builder's Club Chess Club Crime Stoppers Fellowship of Christian Athletes Military Child Club Orchestra Radio Club Technology Student Assoc.	Baseball Basketball Football Golf Tennis Track Wrestling	Basketball Golf Softball Tennis Track Volleyball
MacArthur MS School Report Card 77—C+ Great Expectations Model School 2008-2012	774	Honors Reading Honors English Honors Math Honors Science	Art Band Orchestra Vocal Music Speech/Drama Robotics/Engineering Spanish Culture Keyboarding Study Skills PE Agriculture (8th Grade) Spanish (8th Grade)	Academic Team Art Club Builders Club Cheer Chess Club Choir FCA Military Child Club Lil Mac Maniacs Unify Partners Robot Club	Archery Baseball Basketball Football Golf Tennis Track Wrestling	Archery Basketball Cheerleading Golf Softball Tennis Track Volleyball
Tomlinson MS School Report Card 71—C— Modified Dress Code/Uniform	848	Honors Science Honors Pre-Algebra Honors Algebra I Pre-AP Language Arts Pre-AP Reading	4-Step Writing Art Band Computers Creative Writing Life Mgt./Pers. Dev. PE Spanish Tech Ed Music Yearbook	Academic Team Cheer Choir FCCLA Military Child Club National Jr. Honor Society Orchestra Partners Club Student Council	Baseball Basketball Football Golf Tennis Track Wrestling	Basketball Cheerleading Golf Softball Tennis Track Volleyball

8TH GRADE READING PROFICIENCY/OKLAHOMA DRIVERS LICENSE

Any person under the age of 18 wishing to apply for a drivers' license or permit in Oklahoma shall successfully demonstrate a satisfactory reading ability at the 8th grade level (unless student in on an IEP program). Individuals under the age of 18 who have previously demonstrated reading competency in another state may submit the results of such tests to the State Department of Education for verification and approval. Students who have not passed a reading proficiency test in another state should check with school officials for the next scheduled alternate assessment opportunity.

Elementary Schools	Phone	Pre-K	**Modified Dress Code (Uniform)	Ext. Day 7:15-8:30am and 4-5:30pm	##Special Services	Students	2015School Report Card
Almor West	580-536-6006	AM/PM	Yes	Yes	SP, PSC	372	81—B—
Beginnings Academy	580-585-6407	Full Day				391	NA
Carriage Hills	580-248-6161	AM/PM	Yes	Yes		336	64—D
Cleveland	580-353-8861	Full Day	Yes		OT	290	88—B+
Crosby Park	580-353-7107	Full Day	Yes	Yes	SP, PT	325	84—B
Edison	580-536-4223		Yes	Yes		500	82—B—
Eisenhower	580-355-4599		Yes	AM only	SP	338	69—D+
Freedom	580-713-0600	AM/PM	Yes			1,100	83—B
Hugh Bish	580-248-2244		Yes	Yes		339	59—F
John Adams	580-353-7983		Yes	Yes		184	85—B
Learning Tree (PreK)	580-355-6197	Full Day			ST, PT, OT	352	NA
Lincoln	580-355-4799	AM/PM	Yes		PSY, SP	425	79—C+
Pat Henry	580-355-2617		Yes		SP	551	68—D+
Pioneer Park	580-355-5844		Yes	Yes	PSY, PSC, SP	500	77—C+
Ridgecrest	580-355-6033		Yes			501	62—D—
Sullivan Village	580-355-0800	Full Day	Yes	Yes	ST, OT	492	72—C—
Washington	580-353-6299		Yes		SP	283	81—B—
Whittier	580-355-5238		Yes	Yes	SP	300	87—B+
Woodland Hills	580-536-7991		Yes	Yes	SP	450	88—B+

** Modified Dress Code/Uniform: Knit polo style shirt with collar (short or long sleeve), sweater, cardigan, sweatshirt or hoodie in any solid color (no emblem) worn with black, navy or khaki slacks, shorts, skirts or jumpers. NO DENIM is permitted.

ST-Speech Therapist/Asst.; SP – Speech Pathologist/Asst.; PT – Physical Therapist/Asst.; OT – Occupational Therapist/Asst.; PSY-Psychologist; PSC – Psychometrist;

Pre-K Collaboration Sites	Location	Hours of Operation	
Beginnings Academy	501 Woodbridge, Lawton OK	9am-3:30pm	Must qualify through Crossroads Youth & Family Services (580-248-0474)
Fort Sill Cooper CDC	Fort Sill	5:30am-5:30pm	Space is limited. Must meet Department of Army eligibility and priority system criteria. Placement must be approved through Parent Central Services (580-442-3927). Children already enrolled in CDC have priority on Pre-K placement. Program fees are based on DOD fee policies. Enrollment in before/after care is required.
Fort Sill Grierson CDC	Fort Sill	5:30am-5:30pm	
Fort Sill Tincher CDC	Fort Sill	5:30am-5:30pm	
Smart Start # 2	80 NE 20 th , Lawton 580-248-8125	5am-6pm	Financial aid available through Military Subsidy or OK State Aid Full day programs – enrollment in before/after care is required
Smart Start # 4	1416 W Gore, Lawton 580-248-3883	5am-6pm	
Smart Start # 5	1310 NW Ferris, Lawton 580-248-7788	5:30am-6pm	
Smart Start # 6	5402 NW Kinyon, Lawton 580-595-7063	5:30am-6pm	
Creative Moments	1421 NW 67 th , Lawton 580-536-7288	5am-6pm	
Wonder Years	1804 NW 52 nd , Lawton 580-353-6161	5:30am-6:30pm	

SPECIAL SERVICES

580-353-0334

SPECIAL SERVICES CENTER

The Special Services Center is the central office for special education services in Lawton Public Schools. This office coordinates the delivery of special education and related services for approximately 2,500 students with disabilities under the Individuals with Disabilities Education Act (IDEA). Lawton Public Schools provides special education and related services to all eligible special education students ranging from age 3 through 21. Lawton public schools currently provides services to children with disabilities in the following federal and state categories:

- Autism
- Deaf/Blind
- Deafness/Hearing Impairment
- Developmental Delay
- Emotional Disturbance
- Intellectual Disability
- Orthopedic Impairment
- Other Health Impairment
- Multiple Disabilities
- Specific Learning Disabilities
- Speech and/or Language Impaired
- Traumatic Brain Injury
- Visual Impairment

Lawton Public Schools provides the following related services as recommended by the IEP team:

- Occupational Therapy
- Nursing Services
- Physical Therapy
- Speech Therapy
- Vision Therapy
- Special Transportation

SPECIAL EDUCATION SERVICES

Special Education services range from early childhood special education services to an extended high school transition program for students ages 18-21. Lawton Public Schools offers a wide range of service delivery options for consideration by IEP teams, including:

- Regular education classes with accommodations
- Co-teaching in a regular classroom
- Resource rooms/supplementary services
- Direct instruction
- Self-Contained special education Classes

BEFORE YOU ENROLL:

Please call Special Services (580-353-0334) before enrolling in any Lawton school. Upon review of your child's records, recommendations and decisions will be made regarding the best placement and school for your child.

1. Please bring your child's current education records including all special education records. For military families, be sure to hand carry your child's educational records—do not pack them with your household goods.
2. Bring a copy of the child's most current IEP. This is the Individualized Education Program that is developed for every eligible special education student by his/her public school. Every eligible student has an IEP.
3. Further records are helpful, but not necessary. These would include:
 - Special education eligibility documentation
 - Psycho-educational evaluations or psychological evaluations
 - Current medical records (including information about prescribed medications)
 - Academic reports/report cards from previous school
 - Records of previous placement (type of special education class in which the child received services)
 - Attendance records

EXCEPTIONAL FAMILY MEMBER PROGRAM

580-442-4916

The Army Community Service (ACS) Exceptional Family Member Program (EFMP) works with other military & civilian agencies to provide comprehensive & coordinated community support, educational, housing, personnel, & medical services to Active Duty Soldiers and Family members enrolled in the program. Per AR 608-75, enrollment into the EFMP is mandatory for Soldiers who have a Family member with any medical and/or educational need. If dual military, both Soldiers must enroll in the program.

GIFTED AND TALENTED PROGRAMS

Nomination

Nominations of students for the Gifted and Talented Program are accepted from:

- Professional Educators
- Parents
- Community Members
- Peers
- Self
- Others as appropriate

Screening

Data will be collected from the following sources:

- Standardized ability and achievement tests (a score at the 97th percentile or above results in automatic placement, with parental approval)
- Student achievement within curriculum
- Student work portfolios
- Student achievement outside the school's curriculum

Mission

The mission of the Gifted and Talent program is to develop and challenge students who give evidence of high performance capability as defined by state law in the areas of:

- Intellectual Ability
- Creative Ability
- Leadership Ability
- Artistic Ability
- Specific Academic Ability

TRANSPORTATION

Lawton Public Schools provides transportation for students who live on Fort Sill to the following schools:

- Pre-K—5th Grade: Freedom Elementary
- 6th—8th Grade: Central Middle School
- 9th-12th Grade: Lawton High

The following Housing Areas on Fort Sill are within 1 1/2 miles of Freedom Elementary and will not be transported: by LPS

- Geronimo Acres
- Patriot Estates
- Corral Acres
- Crescent Hill
- Old Post Quad

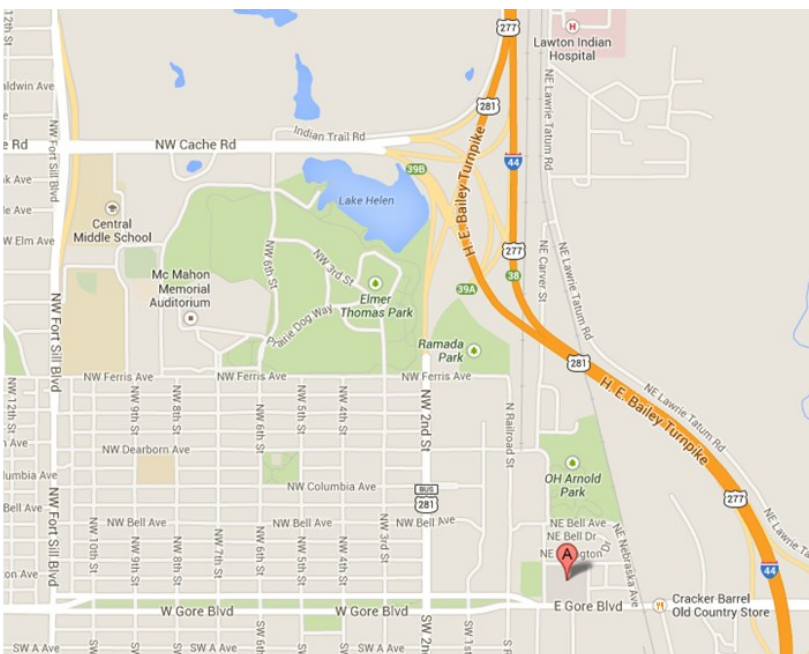
Eligibility to ride a Bus

Lawton Public Schools students who legally reside within the boundaries of the school district and live more than 1 1/2 miles from the school at which they are enrolled are eligible for bus services.

Bus stop locations and approximate pickup/drop-off times are posted on the Lawton Public Schools web site (www.lawtonps.org) after August 1 each year. These times will likely be adjusted during the first two weeks of school as bus routes are finalized.

Students who transfer within the Lawton Public Schools district and those who transfer into the district (from another school district) are not eligible to ride a district school bus and must provide their own transportation.

Students must ride the same bus every day.



**LAWTON PUBLIC SCHOOLS
ENROLLMENT CENTER**
102 E GORE BLVD. LAWTON OK
MONDAY-FRIDAY 8AM-3PM
PHONE: 580-353-0171

All students who are new to the Lawton Public Schools district must enroll for the first time at the LPS Enrollment Center. The following documents are required for enrollment:

- Official State Issued Birth Certificate (hospital souvenir copies not accepted)
- Complete immunization record
- Proof of residency (utility/service bill, lease/mortgage agreement or verification from Fort Sill Housing of status on wait list).